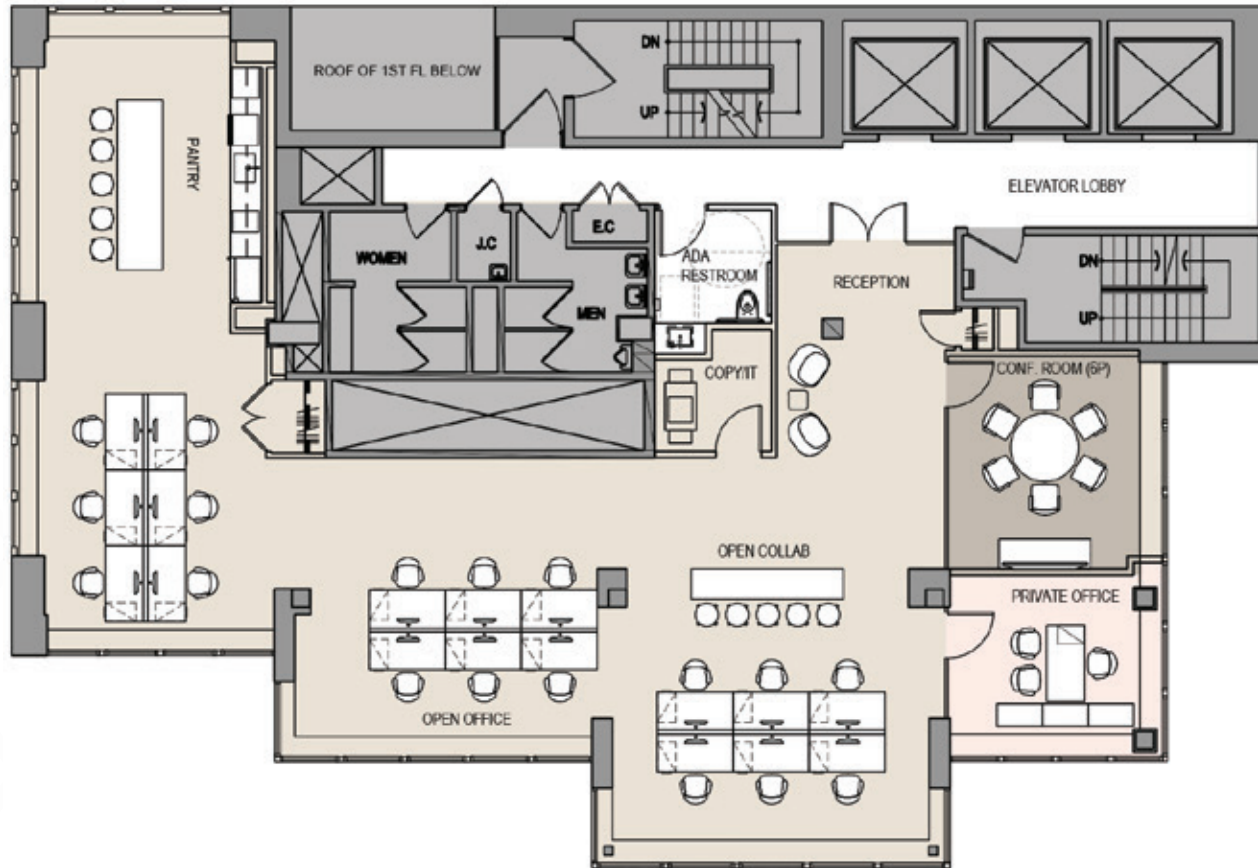


**floor 23 - full floor  
pre-built  
4,174 RSF**



PERSONNEL

OFFICES	1
WORKSTATIONS (30" x 72" BENCHING)	18
RECEPTIONIST	1
<b>TOTAL HEADCOUNT</b>	<b>42</b>

Lexington Avenue

40<sup>th</sup> Street

